

CM-3X



AVAILABLE AT
www.InsulationMachines.net



Manufacturer
Cool Machines

Purchase from:
Insulation Machines
Barry Pendley
810-614-0072
barry@insulationmachines.net

CM3X Machine System

*Finally, we're "cooking" with GAS!
...or Diesel...or Battery...or PTO...or Hybrid*



*Machine Shown
with Options

A true front mount machine by Cool has been a long time in development, but we didn't want to offer a generic machine that seemed like a copy and paste product!

We wanted to offer the most flexible machine, when it comes to powerplant with a simplified drive system. Featuring:

- Dual hopper agitators combined with our "Scalping Auger" design for increased fiber feeding
- Standard 24" (61cm) airlock for top level performance
- **The new Hypershredder** for ultra enhanced fiber conditioning.
- Massive 110 ft³ (3.12 m³) hopper



Production Rates:

24" (61cm) Airlock

Material	Production Rate
Cellulose	5000 lbs/hr. (2268 kg/hr)
Fiberglass	2300 lbs/hr. (1043 kg/hr)

Optimal Performance with 'ALL' Fibers

CM3X



Specifications:

Weights:

- Gas Engine – 2100 lbs. (953 kg)
- Diesel Engine – 1500 lbs. (680 kg)
- 96v Battery – 1550 lbs. (703 kg)
- Gas/Battery Hybrid – 1550 lbs. (703 kg)
- Diesel/Battery Hybrid – 1550 lbs. (703 kg)
- PTO – 1550 lbs. (703 kg)
- Electric (Shore Power) – 1550 lbs. (703 kg)

Dimensions (LxWxH):

- 75" x 61" x 94" (190.5cm x 155cm x 239cm)

Hopper Capacity: 110 ft³ (3.12 m³)

Airlock (Ø x Long): Equipped with our latest Hyper-shredder technology for improved fiber conditioning!
Ø12" x 24" with Ø4" Output Tube (Ø30.5cm x 61cm with Ø10.16cm Output Tube)

PD Blower (10hp equivalent)

- 280 cfm, 6.0 psi (476 m³/hr, 414 mbar)

Power Requirements Options (US):

- 30 amp, 240 volt, single input, 1 Phase
- 15 amp, 480 volt, single input, 3 phase



Massive hopper with dual agitators to eliminate bridging and, of course, a Cool signature 'scalping' auger to enhance fiber feeding!



Shear key equipped to protect expensive mechanical components in the event of a machine lockup!



Standard motorized slidegate allows for flexibility in truck/trailer placement (no need to hand crank!).

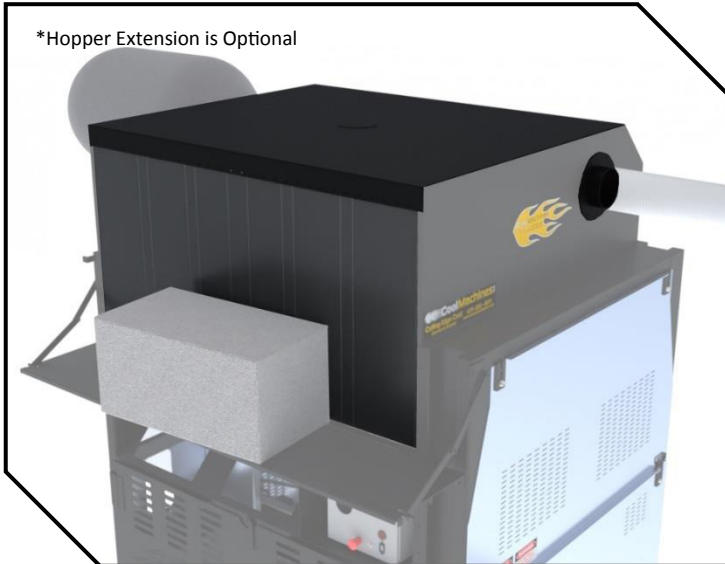


Available through www.InsulationMachines.net

Vac Hood Conversion Kit!

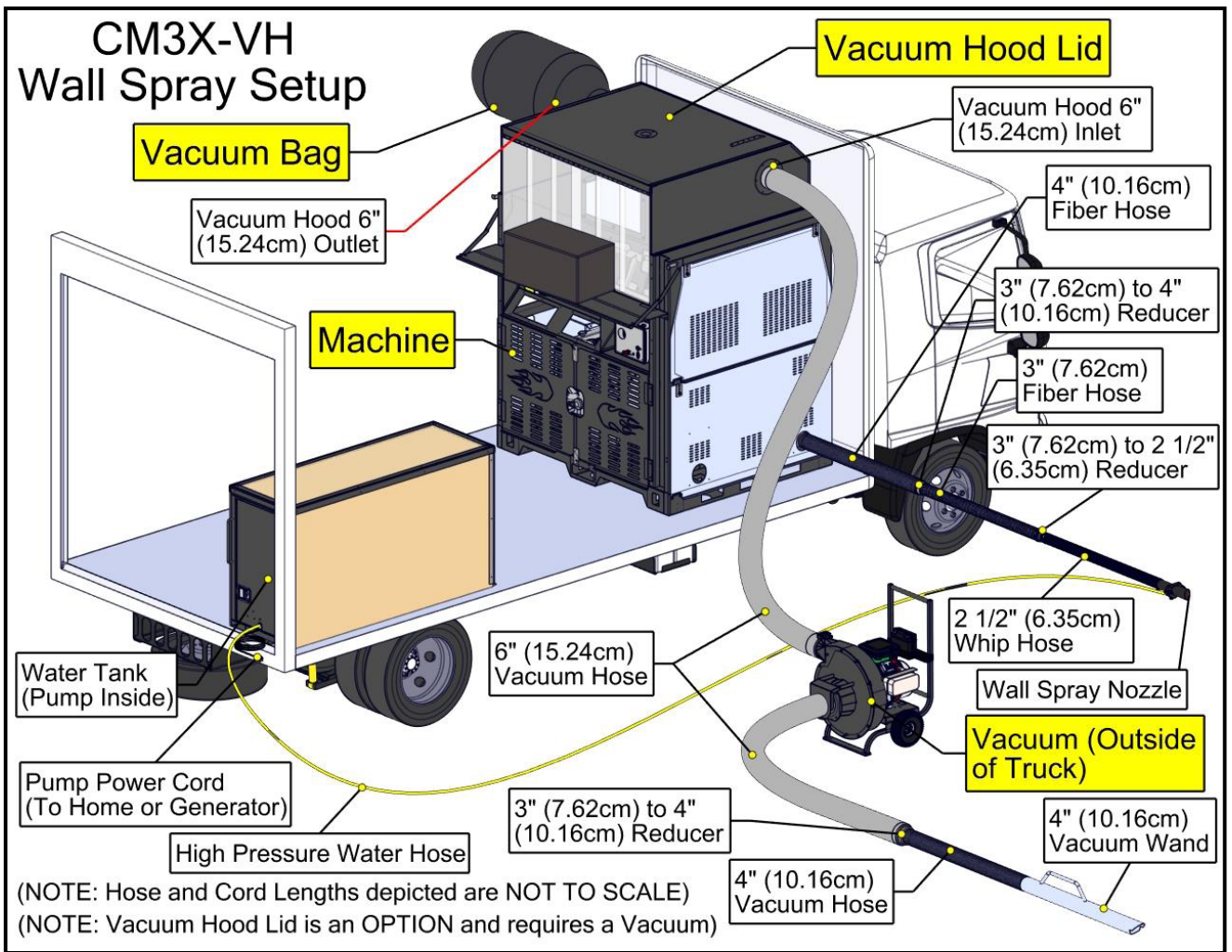
CM3X, a Gas Vac, and a water source = Wall Spray Capability!

Add our Vac Hood Conversion kit to take the next step and offer wall spray to your company's service portfolio!



Make your machine wall spray capable with just a few modifications to your CM3X's Hopper Extension*, and did we mention **no additional power requirements!**

This modification, also, will not alter your machine's ability to be used as a standard blowing machine.



Available through www.InsulationMachines.net

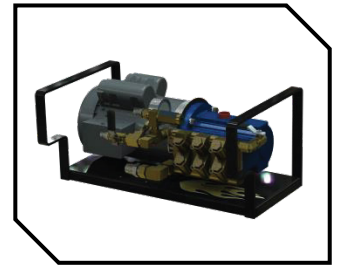
Wireless Remotes Because Time IS Money!

Save setup time, reduce the amount of cords, and become more efficient with our selection of Wireless Remotes!



Wall Spray Equipment!

We have the equipment and knowledge to make sure the technique sticks with you...and your insulation sticks to the wall!



Hose, Clamps, Connectors, and Swivels...Oh My!

We offer a variety of hoses along with **EVERYTHING** you need to get your system off and running at its Coolest!



Keep the dust down!

Fiber getting dustier in the attic? Want to actually SEE where you're spraying? Our Internal Wetting System (IWS) is here to help!



Help your business suck!

Our Cool Insulation Vacuums will make getting that old, dirty insulation out of the attic a breeze! Whether it's cellulose, fiberglass, rockwool, or even batts... we have a Cool Vac for it!

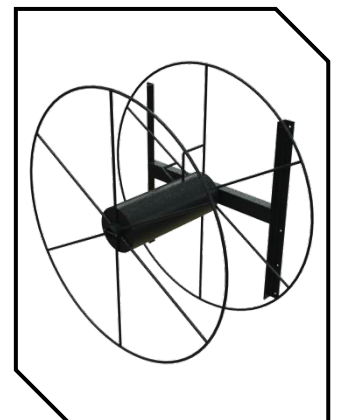


Hose Reels for Hose Protection and Storage!

Protect, manage, and store your hose during transport! Available capacity sizes:

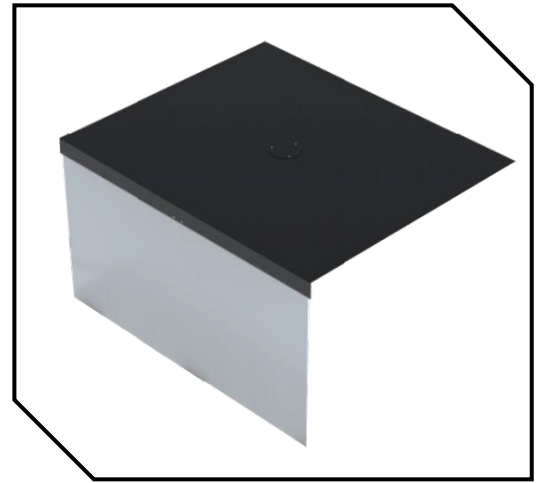
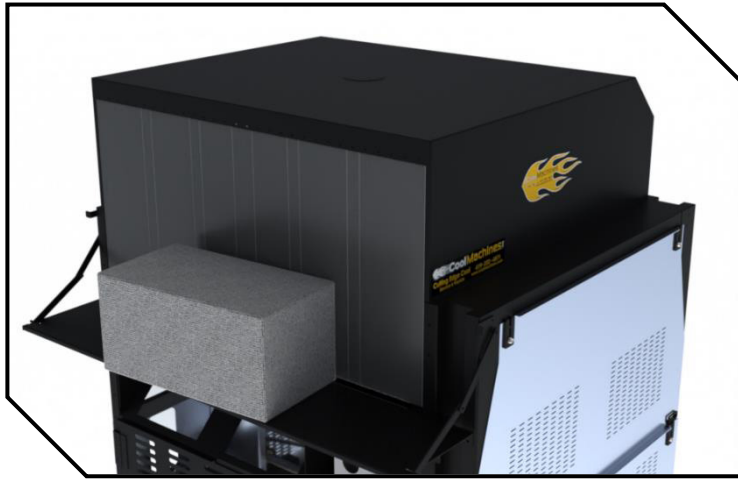
- Ø34" (Ø86.4cm) x 26" (66cm) wide - (38" [96.5cm] tall for Floor Mount)
 - 150' of 3" hose (45.7m of 7.6cm hose)
- Ø48" (Ø122cm) x 26" (66cm) wide - (52" [132cm] tall for Floor Mount)
 - 250' of 3" hose (76.2m of 7.6cm hose)
 - 150' of 4" hose (45.7m of 10.2cm hose)

*Also available as a Live Reel!



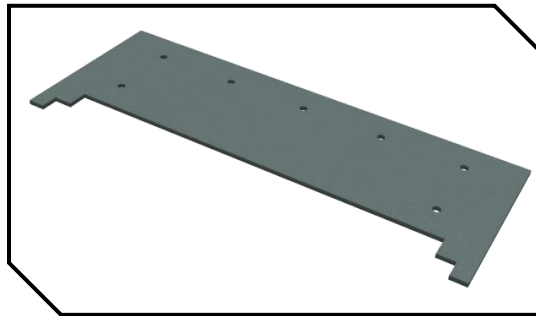
Accessories

Keep your work area clean!
 *Optional Lid & Dust Curtain will reduce the amount of



Maintenance!

Let's face it, that machine is going to need maintenance at some point in time...it's inevitable. All of our products have OEM replacement parts available, directly from us. Just give us a call and we'll get you



Quick Cool Comparison



CM3500XL

- 107" x 29" x 83" (272cm x 74cm x 211cm)
- Max Hopper Capacity w/ Ext: 69 ft³ (1.95 m³)
- 2/4 Centrifugal OR 5hp/7.5hp/10hp PD Blowers
- Ø12" x 20"/24" Airlock OR Ø14" x 24" Airlock (Ø30.5cm x 50.8cm/60.9cm OR Ø35.6cm x 60.9cm)



CM3X

- 75" x 61" x 94" (190.5cm x 155cm x 239cm)
- Max Hopper Capacity: 110 ft³ (1.47 m³)
- 10hp equivalent PD Blower
- Ø12" x 24" Airlock (Ø30.5cm x 60.9cm)



CM4500XL

- 129" x 35" x 89" (328cm x 89cm x 226cm)
- Max Hopper Capacity w/ Ext: 125 ft³ (3.54 m³)
- 5hp/7.5hp/10hp/15hp PD Blowers
- Ø12" x 20"/24" Airlock OR Ø14" x 24" Airlock (Ø30.5cm x 50.8cm/60.9cm OR Ø35.6cm x 60.9cm)

Available through www.InsulationMachines.net

ACod Comparison: CM3X



Specifications	CM 3X (Gas)	CM 3X (Diesel)	CM 3X (PTO)	CM 3X (Battery)	CM 3X (Electric)
Airlock Size (ϕ) x Length, Hose Output	$\phi 12'' \times 24''$ Long, 4" Hose Output ($\phi 30.5 \text{ cm} \times 60.9 \text{ cm}$ Long, 10.16cm Hose Output)				
Airlock Pressure	6.0 p.s.i. (414 mbar)				
Blower Type	(1) 10hp equivalent Positive Displacement				
Blower Volume	280 CFM (476 m ³ /hr)				
Hopper Capacity	110 ft. ³ (3.12 m ³)				
Weight	2100 lbs. (953 kg)	1841 lbs. (835 kg)	1919 lbs. (871 kg)	2126 lbs. (964 kg)	2126 lbs. (964 kg)
LxWxH Inches centimeters	75" x 61" x 94" 190.5 x 155 x 239				
Loading Height	59.5" (151.13cm)				
Power Requirements	N/A	N/A	N/A	Charger: ?	30 amp I , 240V, 1 PH Or 15 amp Input, 480V, 3 PH
Drive Motor	23hp Vanguard / 22hp Honda	25hp Kubota Diesel	PTO Driven	3 hp	3 hp
Generator Size	N/A	N/A	N/A	22 KW	22 KW
Max Hose Length for Full Production	300 ft (91m)				
Warranty	2 year (limited)				
Features:					
Available as a Hybrid*	Yes	Yes	Yes	Yes	Yes
Powder Coated Metal	Yes	Yes	Yes	Yes	Yes
Check Valve Blower Protection	Yes	Yes	Yes	Yes	Yes
Hourmeter/Voltmeter	Yes	Yes	Yes	Yes	Yes
Pressure Gauge	Yes	Yes	Yes	Yes	Yes
Re Lube Bearing	Yes	Yes	Yes	Yes	Yes
Modular Control Panel	Yes	Yes	Yes	Yes	Yes
Front Panel Reset Overloads	Yes	Yes	Yes	Yes	Yes
L.E.D. Plugs/Self Diagnostics	Yes	Yes	Yes	Yes	Yes
Heavy Duty Remote Cord	Yes	Yes	Yes	Yes	Yes
Scalping Auger	Yes	Yes	Yes	Yes	Yes
NEW Hyper Shredder	Yes	Yes	Yes	Yes	Yes
Hopper Extension w/ Loading Tray*^	Yes	Yes	Yes	Yes	Yes
Lid & Dust Curtain*	Yes	Yes	Yes	Yes	Yes
Wheel Package*	No	No	No	No	No
Integrated Booster Connection	No	No	No	No	No
Recycle Fiber Vacuum System	No	No	No	No	No
Production Rates $\phi 12'' \times 24''$ ($\phi 30.5 \text{ cm} \times 60.9 \text{ cm}$):	Cellulose: 5000 (2268 kg/hr)			Fiberglass: 2300 (1043 kg/hr)	

Questions? Call Barry at 810-614-0072